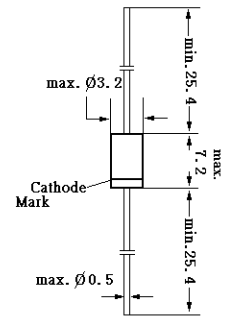


POINT CONTACT GERMANIUM DIODES

1N60 is a point contact diode employing N-from Germanium and gives an efficient and excellent linearity when used in TV image detection, FM detection, radio, AM detection, etc.



Glass case JEDEC DO-7
Dimensions in mm

Absolute Maximum Ratings (T_a = 25°C)

	Symbol	Value	Unit
Peak Reverse Voltage	V _{RM}	45	V
Reverse Voltage dc	V _R	20	V
Peak Forward Current	I _{FM}	150	mA
Average Rectified Output Current	I _O	50	mA
Surge Forward Current	I _{surge}	500	mA
Junction Temperature	T _J	75	°C
Storage Temperature Range	T _S	-55 to +75	°C

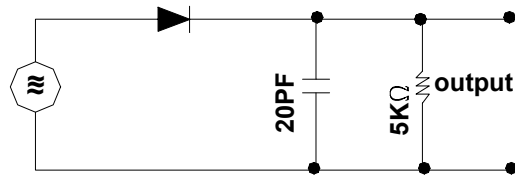
Characteristics (1N 60 P)

	Symbol	Test condition(T _a 25±2°C)	Min.	Typ.	Max.	Unit
Forward Current	I _F	V _F = 1V	4	-	-	mA
Reverse Current	I _R	V _R = 10V	-	-	50	uA
	I _R	V _R = 10V	-	-	100	uA
Junction Capacitance C	-	f = 1MHz, V = -1V	-	-	1	pF
Rectification efficiency	n	V _i = 2Vrms, R = 5KΩ C = 20PF, f = 40MHz	55	-	-	%

Pair $\Delta I_F \leq 6mA$ at 1V, $\Delta I_R \leq 20uA$ at 10V

(*) 1N60P is selected device by Reverse Current.

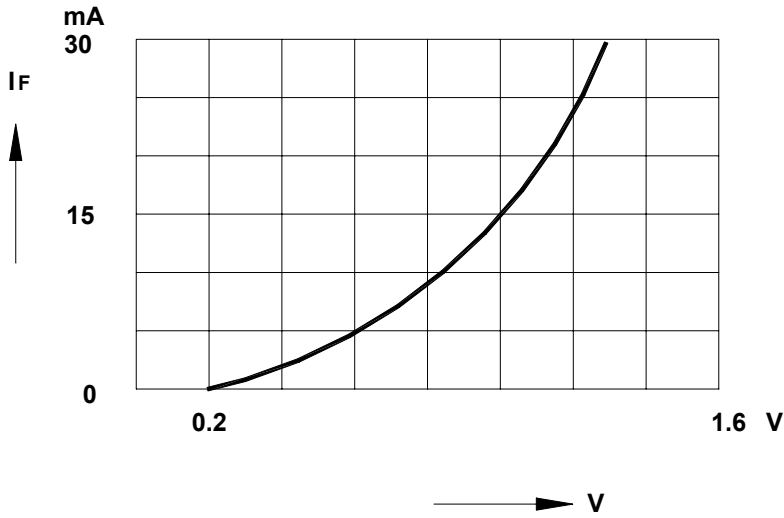
1N60P, 1N60



Input 2Vrms

Rectification Efficiency Measurement Circuit

Forward Characteristics



Reverse Characteristics

