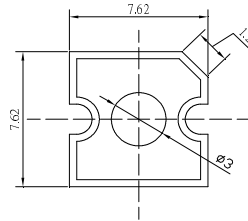


**■Features**

- High Luminous Super Flux Output
- 3  $\phi$  Standard Directivity
- Superior Weather-resistance
- UV Resistant Epoxy
- Water Clear Type

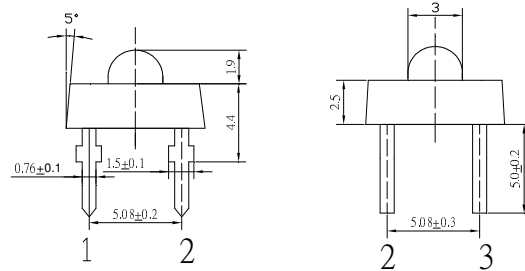
**■Outline Dimension**


Unit:mm  
Tolerance: $\pm 0.3$ mm

1,4 Anode  
2,3 Cathode

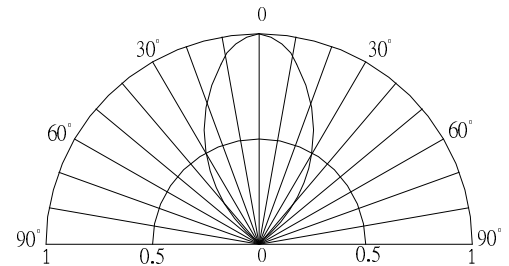
**■Applications**

- Traffic Signal
- Backlighting
- Signal And Channel Letter
- Other Lighting


**■Absolute Maximum Rating**

( $T_a=25^\circ\text{C}$ )

Item	Symbol	Value	Unit
DC Forward Current	$I_F$	50	mA
Pulse Forward Current*	$I_{FP}$	120	mA
Reverse Voltage	$V_R$	5	V
Power Dissipation	$P_D$	120	mW
Operating Temperature	$T_{opr}$	-30 ~ +85	$^\circ\text{C}$
Storage Temperature	$T_{stg}$	-40 ~ +100	$^\circ\text{C}$
Lead Soldering Temperature	$T_{sol}$	260 $^\circ\text{C}$ /5sec	-

**■Directivity**


\*Pulse width Max.10ms , Duty ratio max 1/10

**■Electrical -Optical Characteristics**

( $T_a=25^\circ\text{C}$ )

Item	Symbol	Condition	Min.	Typ.	Max.	Unit
DC Forward Voltage	$V_F$	$I_F=20\text{mA}$	1.8	2.1	2.4	V
DC Reverse Current	$I_R$	$V_R=5\text{V}$	-	-	10	$\mu\text{A}$
Domi. Wavelength*	$\lambda_D$	$I_F=20\text{mA}$	620	625	630	nm
Luminous Intensity*	$I_v$	$I_F=20\text{mA}$	-	4000	-	mcd
Lumen Output	$I_v$	$I_F=20\text{mA}$	-	6000	-	lm
50% Power Angle	$2\theta_{1/2}$	$I_F=20\text{mA}$	-	60	-	deg

\*1 Tolerance of dominant wavelength is  $\pm 1$ nm

\*2 Tolerance of luminous intensity is  $\pm 15\%$

**■ Maximum Forward Current**

Maximum Permissible Forward Current  $T_j=115^\circ\text{C}$

