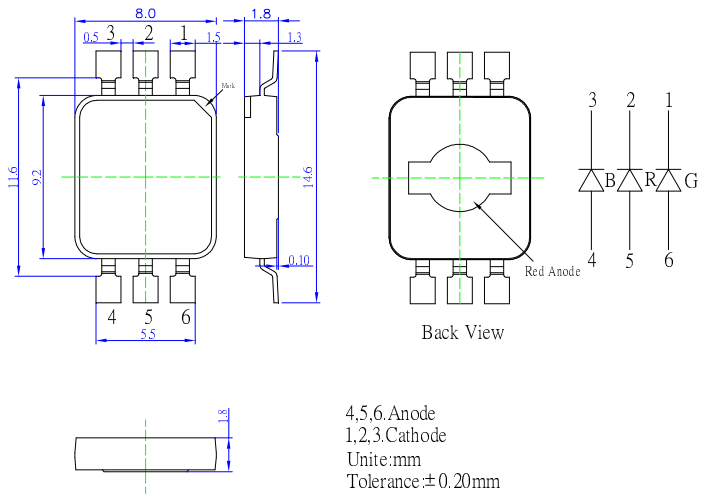


**■Features**

- Highest Luminous Flux
- Super Energy Efficiency
- Long Lifetime Operation
- Superior ESD protection
- Superior UV Resistance
- Water Clear Type

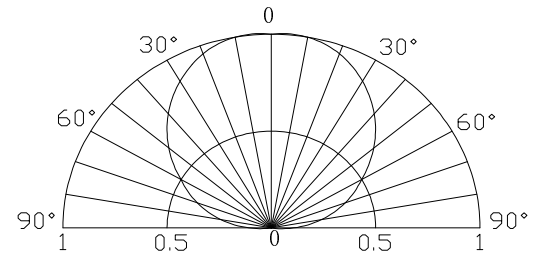
**■Applications**

- Mobile Phone Flash
- Automotive Interior/Exterior Lighting / Signal Lighting
- Architectural Lighting
- LCD TV / Monitor Backlight
- Projector Light Source / Traffic Signals / Task Lighting
- Decorative / Pathway Lighting / Household Applications

**■Outline Dimension**

**■Absolute Maximum Rating**
**(Ta=25°C)**

Item	Symbol	Value		Unit
		Red	Green/Blue	
DC Forward Current	$I_F$	400	400	mA
Pulse Forward Current*	$I_{FP}$	500	500	mA
Reverse Voltage	$V_R$	5	5	V
Power Dissipation	$P_D$	1200	1600	mW
Operating Temperature	$T_{opr}$	-30 ~ +85		°C
Storage Temperature	$T_{stg}$	-40 ~ +100		°C
Lead Soldering Temperature	$T_{sol}$	260°C/5sec		-

\*Pulse width Max.10ms Duty ratio max 1/10

**■Directivity**

**■Electrical -Optical Characteristics**
**(Ta=25°C)**

Item	Symbol	Condition	Min.	Typ.	Max.	Unit
DC Forward Voltage	$V_F$ (R)	$I_F=350mA$	2.0	2.5	3.0	V
	$V_F$ (B/G)	$I_F=350mA$	3.0	3.3	4.0	V
DC Reverse Current	$I_R$	$V_R=5V$	-	-	10	$\mu A$
Domi. Wavelength	$\lambda_D$ (Red)	$I_F=350mA$	620	625	630	nm
	$\lambda_D$ (Green)	$I_F=350mA$	520	525	535	nm
	$\lambda_D$ (Blue)	$I_F=350mA$	465	470	475	nm
Luminous Flux	$\Phi_v$ (Red)	$I_F=350mA$	40	50	-	lm
	$\Phi_v$ (Green)	$I_F=350mA$	65	75	-	lm
	$\Phi_v$ (Blue)	$I_F=350mA$	10	15	-	lm
50% Power Angle	$2\theta_{1/2}$	$I_F=350mA$	-	120	-	deg

Note: Don't drive at rated current more than 5s without heat sink for Commercial 1 Power emitter series.